

1). What is the first step of the autonomous maintenance?

- (A) General inspection
- (B) Autonomous inspection
- (C) Increase operator knowledge
- (D) Autonomous management

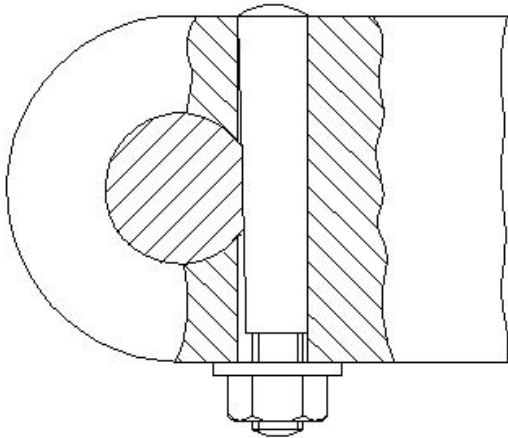
Correct Answer: C

2). How does the maintenance record provide judgement about the frequency of preventive maintenance?

- (A) By analysing rejection and rework
- (B) By analysing inventory and purchase
- (C) By analysing fault and rectification
- (D) By analysing quality and fit for use

Correct Answer: C

3). Which type of pin is shown in the figure?



- (A) Taper pin
- (B) Split pin
- (C) Cotter pin
- (D) Spring pin

Correct Answer: C

4). Which activity prevents breakdown of machinery in basic maintenance?

- (A) Routine maintenance
- (B) Preventive maintenance
- (C) Reactive maintenance
- (D) Autonomous maintenance

Correct Answer: B

5). What is the solution for sealing between mating surfaces with a poor surface finish?

- (A) Using compressed cork gasket
- (B) Using rubber gasket
- (C) Using PTFE cord sealing
- (D) Using metallic gasket

Correct Answer: A

6). Which formula is used to find weight of raw material?

- (A) Volume \times specific weights
- (B) Area \times density

(C) Volume \times density

(D) Area \times specific weight

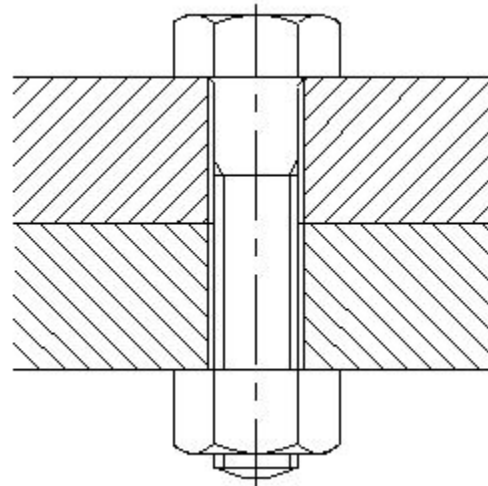
Correct Answer: C

D7). What is the availability percentage, if the machine is available to run 20 hours but has only run for 15 hours?

- (A) 75%
- (B) 57%
- (C) 25%
- (D) 5%

Correct Answer: A

8). Which type of bolt shown in the figure?



- (A) Bolt with clearance hole
- (B) Body fit bolt
- (C) Anti-fatigue bolt
- (D) 'T' bolt

Correct Answer: A

9). Which process does a comprehensive examination and restoration of a system?

- (A) Testing
- (B) Repair
- (C) Overhauling
- (D) Reasserts

Correct Answer: C

10). How is the problem of the connecting rod subjected to continuously alternating load condition is rectified?

- (A) By using bolts with clearance hole
- (B) By using anti - fatigue bolt
- (C) By using body fit bolt
- (D) By using studs

Correct Answer: B

11). Which type of maintenance provides less down time in production?

- (A) Breakdown maintenance
- (B) Preventive maintenance
- (C) Reactive maintenance

(D) Routine maintenance

Correct Answer: B

12). What is the use of maintenance records analysis?

(A) To minimize the frequent break downs

(B) To monitor tool life

(C) For operator efficiency

(D) To set up time

Correct Answer: A

13). What is the final step in overhauling process?

(A) Inspection

(B) Repair

(C) Dismantle

(D) Testing

Correct Answer: D

14). Which area is analyzed by using OEE performance measurement tool?

(A) Indicates the area of marketing development

(B) Indicates the area of vendor selection

(C) Indicates the area of employee development

(D) Indicates the area of process development

Correct Answer: D

15). Which is used as vibration isolation material?

(A) Rubber

(B) Plastic

(C) Nylon

(D) Brass

Correct Answer: A

